

Ormskirk Paediatric Emergency Department Monthly Bulletin: April 2011 to March 2012

This bulletin provides a breakdown of all injury attendances at Ormskirk Paediatric Emergency Department (ED) between April 2011 and March 2012.¹

Between April 2011 and March 2012 there were 5,779 ED attendances. Injury attendances peaked in July (n=599), with December (n=249) having the least number of injury attendances (**Figure 1**).

Figure 2 illustrates injury attendances by gender. For all months there were more male (60%) injury attendances than female presenting at Ormskirk Paediatric ED.

Figure 3 presents the age group of injury attendances. Across the whole year two-fifths (40%) of injury attendances were made by people aged between 10 and 14 years.

Table 1 details the injury group of injury attendances. The majority of injury attendances

were classified as other injury (72%). Just over one-fifth (21%) were recorded as sports Injury and 4% road traffic collisions (RTCs).

Table 2 illustrates the source of referral for patients presenting with injuries. The majority (92%) of injury attendees were recorded as other. **Table 3** presents injury attendances by location of incident. Nearly four in ten of all injury locations were recorded as in a public place (36%) or in the home (36%). **Table 4** shows the disposal method of injury attendances. Over seven in ten (71%) of attendees were discharged requiring no follow-up.

Assault attendees presenting at the Ormskirk ED between April 2011 and March 2012 were mainly male (75%) and the primary location of assault was in a public place (56%). The majority of ED assault attendances were aged 5 and 14 years (n=45; 53%) and 46% were aged between 15 and 29 (n=39).

Figure 1: Total number of injury attendances by month, April 2011 to March 2012

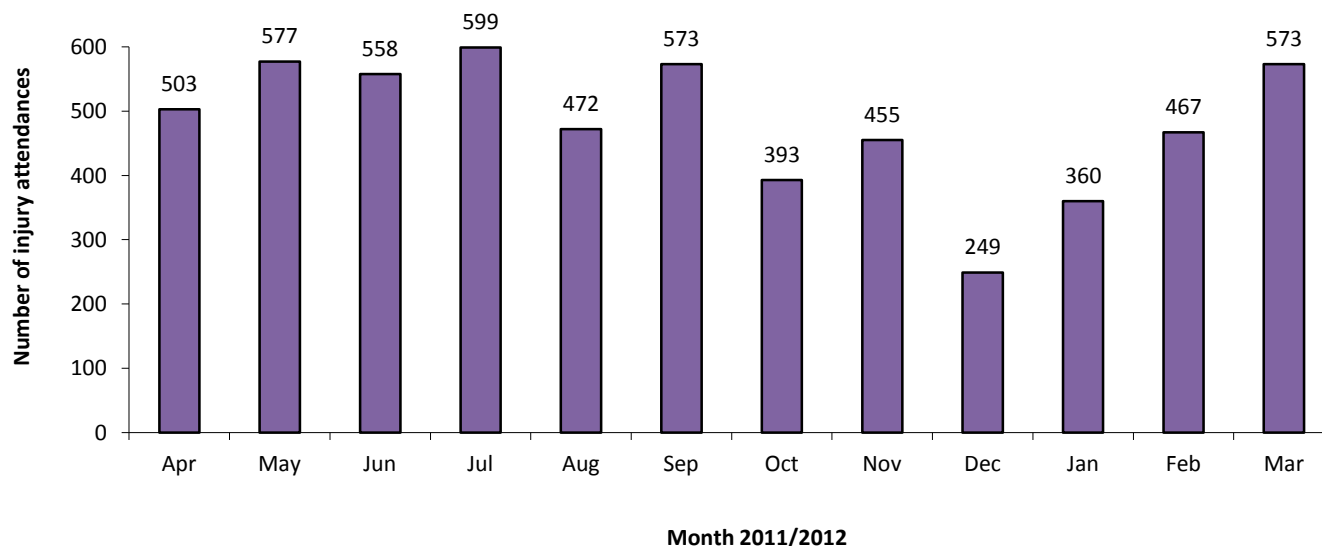


Figure 2: Gender of injury attendances by month, April 2011 to March 2012

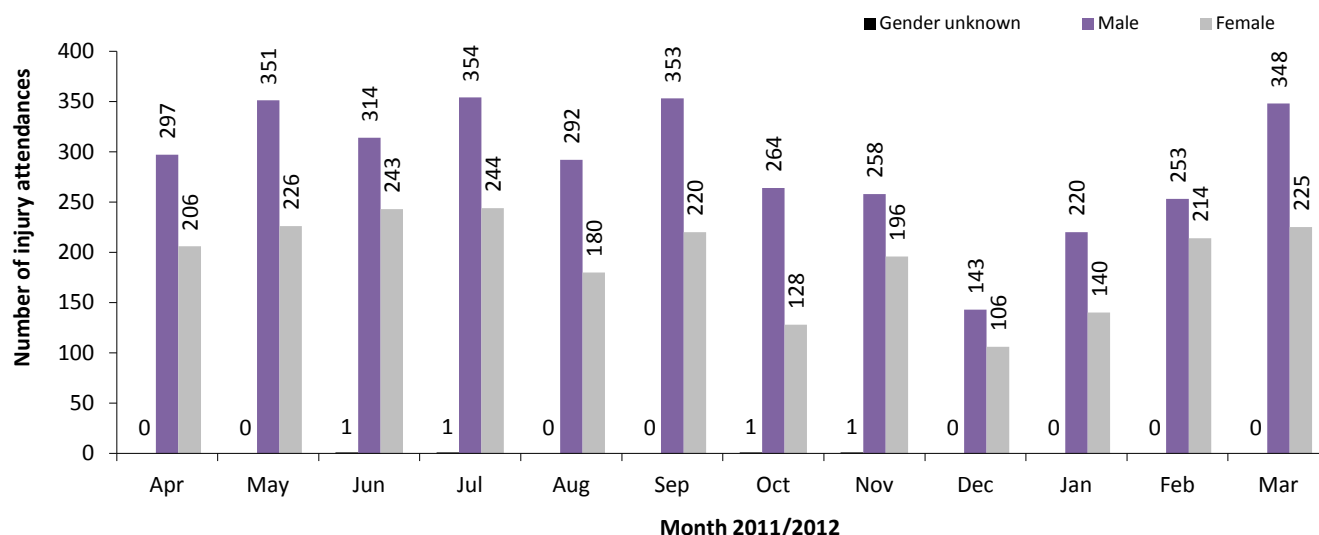


Figure 3: Age group of injury attendances by month, April 2011 to March 2012

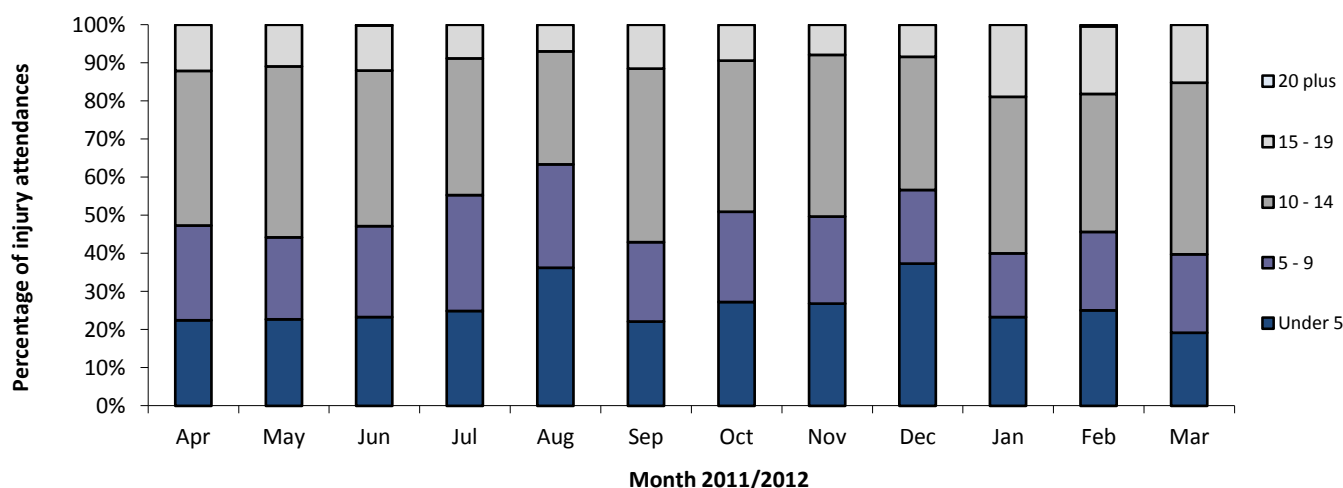


Table 1: Injury attendances by injury group and month, April 2011 to March 2012^{2,3}

Injury group	Apr	May	Jun	Jul	Aug	Sep	Oct	Nov	Dec	Jan	Feb	Mar	Total	%
Other injury	360	407	441	495	401	377	243	295	177	252	327	380	4155	72
Sports injury	113	128	86	73	40	166	106	115	32	78	99	163	1199	21
RTC	20	21	16	22	23	14	21	28	27	18	23	20	253	4
Deliberate self-harm	5	8	***	***	<9	9	<20	***	8	5	12	5	87	2
Assault	5	13	<13	<9	***	7	***	<11	5	7	6	5	85	1
Total	503	577	558	599	472	573	393	455	249	360	467	573	5779	100

Table 2: Injury attendances by source of referral and month, April 2011 to March 2012⁴

Source of referral	Apr	May	Jun	Jul	Aug	Sep	Oct	Nov	Dec	Jan	Feb	Mar	Total	%
Other	470	544	514	562	432	527	349	417	226	334	430	540	5345	92
Health care provider: same or other	14	14	18	19	25	14	10	18	9	9	11	15	176	3
Self referral	6	7	***	***	10	10	19	8	5	***	12	6	91	2
Emergency services	12	***	10	6	***	9	***	***	***	***	***	9	65	1
Educational establishment	***	8	7	***	***	5	5	5	6	***	6	***	52	1
GP	***	***	***	6	***	7	***	***	***	6	***	***	36	1
Unknown	***	***	***	***	***	***	***	***	***	***	***	***	7	0
Police	***	***	***	***	***	***	***	***	***	***	***	***	<7	0
Local authority social services	***	***	***	***	***	***	***	***	***	***	***	***	***	0
Total	503	577	558	599	472	573	393	455	249	360	467	573	5779	100

Table 3: Injury attendances by location of incident and month, April 2011 to March 2012⁵

Location	Apr	May	Jun	Jul	Aug	Sep	Oct	Nov	Dec	Jan	Feb	Mar	Total	%
Public place	220	196	162	223	212	201	160	143	77	117	159	228	2098	36
Home	201	214	216	250	223	192	120	143	110	115	160	144	2088	36
Educational establishment	51	131	120	92	***	152	93	154	<49	109	133	182	1269	22
Other	31	36	61	34	<34	27	20	15	<15	19	15	19	324	6
Total	503	577	558	599	472	573	393	455	249	360	467	573	5779	100

Table 4: Disposal method of all injury attendances by month, April 2011 to March 2012

Disposal method	Apr	May	Jun	Jul	Aug	Sep	Oct	Nov	Dec	Jan	Feb	Mar	Total	%
Discharged - no follow-up	342	407	401	440	329	381	286	337	179	272	356	389	4119	71
Referred to fracture clinic	69	77	80	80	55	80	47	45	21	43	60	87	744	13
Referred to other health care professional	32	36	31	30	30	37	21	32	19	20	22	30	340	6
Admitted to hospital bed	24	18	17	22	21	23	11	19	16	10	12	17	210	4
Transferred to other health care provider	12	11	11	9	21	11	6	7	<7	7	***	11	115	2
Discharged – follow-up by other health care provider	7	17	10	5	5	***	10	***	***	***	7	14	86	1
Referred to other out-patient clinic	7	7	***	9	8	***	10	10	***	***	***	5	72	1
Referred to ED clinic	***	***	***	***	***	34	***	***	***	***	***	***	47	1
Left ED before being treated	6	***	***	***	***	***	***	***	***	***	***	14	36	1
Left ED - refused treatment	***	***	***	***	***	***	***	***	***	***	***	***	5	0
Other	***	***	***	***	***	***	***	***	***	***	***	***	5	0
Total	503	577	558	599	472	573	393	455	249	360	467	573	5779	100

Published May 2012

Johnathan Rooney (TIIG officer)

Centre for Public Health, Faculty of Health and Applied Social Sciences, Liverpool John Moores University

2nd Floor, Henry Cotton Campus, Liverpool, L3 2ET

Tel: 0151 231 4539 Email: j.rooney@ljmu.ac.ukWebsite: www.tiig.info (please note all data requests should be made through the TIIG website)

¹ Previous reports include data from the Minor Injury Unit. These data are no longer housed by Ormskirk's information team but by the PCT and therefore cannot be included in this report.

² *** Please note that all numbers less than five have been suppressed in line with patient confidentiality and if there is only one number in a category then two numbers will be suppressed at the next level (e.g. <6) in order to prevent back calculations from totals.

³ Due to low numbers firework injuries have been included under 'Other injury.'

⁴ GP=general practitioner.

⁵ Due to low numbers injuries sustained at work have been included under 'Other' location.